



More Precision

BESTECH
Sensors & Teaching Equipment

Micro-Epsilon Representatives in
Oceania



Infrared temperature
sensors and infrared ca-
meras for metal
production



Temperature monitoring of inductively heated pipes using CTlaser M2 pyrometers



Temperature measurement in the milling line using the CTratio pyrometer

Process monitoring and quality control with non-contact infrared temperature measurement

IR temperature sensors and thermal imaging cameras from Micro-Epsilon are frequently used for monitoring and control purposes in metal production processes. Numerous models, equipment options and a comprehensive interface concept enable their fast and easy integration in different measuring positions.

Advantages of non-contact temperature measurement technology:

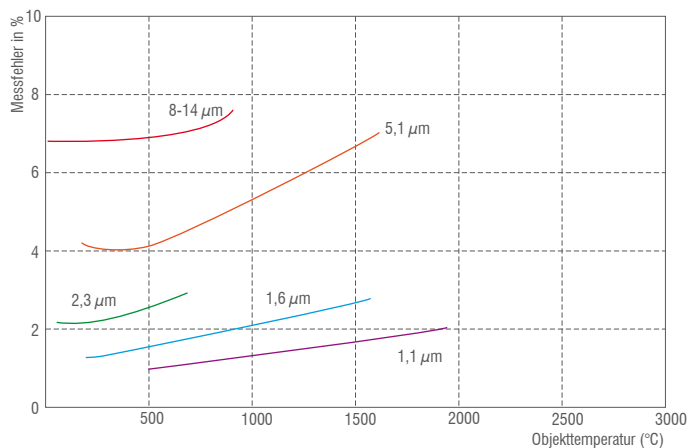
- Energy savings and increased product quality
- Process optimization for increased output
- Non-contact temperature measurement from a safe distance and no influence on the object to be measured
- In-process temperature measurement of moving, hard-to-reach and very hot objects
- Real-time measurements enable temperature adjustments during the process
- Process documentation with thermal videos and images (part of quality audits)

Typical metal production processes

- Blast furnace / melting material
- Manufacture of semi-finished products
- Parts production
- Treatment / mounting

Temperature is a crucial factor in almost every industrial manufacturing process. Adhering to predetermined process temperatures ensures, amongst other things, high product quality.

Providing reliable, reproducible measurement results, particularly in high temperature processes, non-contact infrared temperature measurement has become well established in the metal production and processing industry.



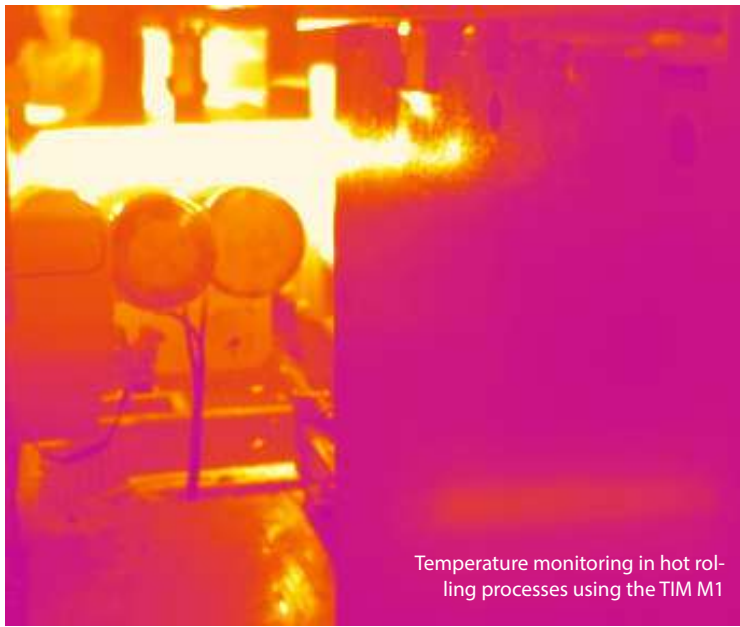
Measuring error depends on wavelength and object tempera-

Temperature measurement of metals with suitable wavelength

The surface of the measurement object determines the choice of the respective sensor model and its wavelength. When choosing a suitable temperature measurement device, it is important to ensure that the infrared radiation has, with a certain wavelength and in a certain temperature range, the highest possible emissivity.

The graph shows that it is sensible to use the shortest wavelength available for the measurement. Choosing a suitable measurement device with the corresponding wavelength ensures maximum measurement accuracy.

Our sales team will be pleased to advise you on the most



Temperature monitoring in hot rolling processes using the TIM M1



Temperature monitoring of cast and forged parts using the TIM M1



Infrared cameras for metal measurements

Thermal imaging cameras are especially used for control and condition monitoring of processes and of semi-finished parts. They measure from a safe distance to the measurement object, record temperature values and can be directly integrated into the control system. The thermoIMAGER TIM M1 from Micro-Epsilon is an extremely compact infrared camera for non-contact temperature measurement of metal surfaces. Their short-wave range enables the cameras to reliably measure the temperature of hot metal surfaces.

In parallel to the visualization of a thermal process, powerful electronics ensures fast response times of 1ms to output the temperature information of the center pixel. Therefore, the camera can also be used for the integration into control systems.



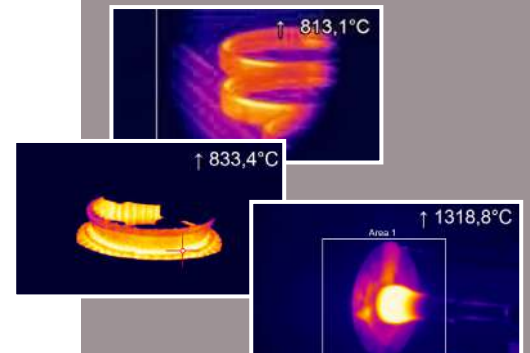
Cooling Jacket / Cooling Jacket Advanced

- Universal cooling housing for infrared cameras up to 315 °C
- Ambient operating temperatures up to 315 °C
- Also available with protection housing and cooling function up to 180 °C
- Air/Water cooling with integrated air purging and optional protective windows
- Modular design for easy fitting of different devices and lenses
- Easy sensor removal on site due to quick-release chassis
- Integration of additional components such as the TIM NetBox, USB Server Gigabit and Industrial Process Interface (PIF) can be integrated in the "Extended" version.



Software

- Display of the thermal image with recording function
- Complete set up of parameters and remote control of the camera
- Detailed analysis of fast, thermodynamic processes
- Output of analog temperature or alarm values via the process interface
- Digital communication via RS232 or DLL for software integration





Temperature monitoring in continuous casting processes using the CTratio pyrometer



Temperature monitoring in the cooling processes of forged parts using the CTLaser M1

Proven technology

Infrared sensors developed and produced by Micro-Epsilon stand out due to their long service life, robust construction and high precision measurements. The sensors are based on proven technology concepts and therefore provide reliable measurements even in harsh environmental conditions.

High speed measurements

For moving objects e.g. in transportation lines, thermoMETER sensors with extremely fast response times are available. Fast response times are an advantage, particularly in high speed processes and control tasks.

Precise and stable measurements

The thermoMETER product group is renowned for its high accuracy and high resolution. Particularly in temperature-critical applications, IR sensors from Micro-Epsilon are the preferred choice for easy, precise measurements. In dusty or smoky environments, the CTratio series of ratio pyrometers are ideal. For improved visualization of the measurement spot, e.g. with red-hot glowing metals, the CTVideo series of video pyrometers are used.

Sensors with integrated electronics for OEM applications are available on request.



Model	Spectral range	Description	Temperature range
Infrared temperature sensors			
CTM1/M2	1µm / 1.6µm	Hot metals	250 °C up to 2200 °C
CTM3	2.3µm	Metals & composite materials from 50 °C	50 °C up to 1800 °C
Infrared temperature sensors with laser sighting			
CTLaserM1/M2	1µm / 1.6µm	Hot metals	250 °C up to 2200 °C
CTLaserM3	2.3µm	Metals & composite materials from 50 °C	50 °C up to 1800 °C
CTLaserM5	0.525µm	Liquid metals from 1000 °C	1000 °C up to 2000 °C
CTLaser COMBUSTION	3.9 / 4.24 / 4.64µm	Measurement through and on flames	200 °C up to 1450 °C
Infrared temperature sensors with crosshair laser sighting and video module			
CTVideo M1/M2	1µm / 1.6µm	Metals & composite materials	250 °C up to 2200 °C
CTVideo M3	2.3µm	Metals & composite materials from 50 °C	50 °C up to 1800 °C
Ratio pyrometer for high speed temperature measurements of red-hot glowing metal objects			
CTratioM1	0.7 to 1.1µm	Hot metal objects, harsh environments e.g. steam, smoke	700 °C up to 1800 °C

Founded in 2002, **Bestech Australia** is an ISO9001 certified company. We specialize in supplying, designing and manufacturing sensors and instrumentation for measurement of physical parameters, data acquisition systems and technical teaching equipment for teaching and training of vocational and engineering education.

We are one of the fastest growing company in Oceania and we provide efficient solutions which could be an individual product or a complete turn-key system. We are constantly expanding our product portfolio to support the industry requirements for test and measurements as well as workforce upskilling. Our products are sourced from world leading suppliers and we complement this by own design and manufacturing capabilities backed by local technical support, service and calibration.

Our customers come from both industries and academia in the fields of engineering, mining, automotive, process & chemical, railway, food & beverages, aerospace, manufacturing, defence, energy and condition monitoring utilise our sensors and measuring instruments for monitoring processes, model validations, optimise products and gain insights from the measurement data as well as use our training equipment for developing and upgrading their on-site employee training program.

Our services include project consulting, sensors design, implementations, test and commissioning, specialists deployment, customer-specific design and development as well as system integration. Bestech consistently provide high-quality services to support your high-end test and measurement requirement.



Unit 14, 44 Garden Boulevard,
Dingley, VIC 3172
P: 03 9540 5100
F: 03 9551 5541
E: enquiry@bestech.com.au
www.bestech.com.au

